

Kingfisher

Yellow Card

POSITIONS OF SUSPENDED WELLHEADS

Coordinates = WGS84

January 2017

(FishSAFE Information (FSI) Version 33)

THIS LIST **EXCLUDES** SUSPENDED WELLHEADS
LOCATED WITHIN **ALL SAFETY ZONES**



The Kingfisher
Information Service

Stay up to date

Always ensure you have the latest
Kingfisher Bulletin and offshore fishing plotter data on-board.

What is a Suspended Wellhead?

A Suspended Wellhead describes structures or equipment located above the seabed which relate to a well that is not currently in production and has been suspended awaiting further intervention. A well may be suspended for a variety of reasons, such as the well is no longer productive, or possibly the well is shut down awaiting work-over operations.

Suspended wellheads present a large solid structure on the seabed that will be physically connected to well casing and quite possibly production casing traveling many kilometres into the reservoir. This is in effect an immovable object to fishermen. A suspended wellhead may stick up 4 metres from the seabed.

Suspended Wellheads are not protected by 500 metre Safety Zones and are not required to have an overtrawlable protection structure.

A Suspended Well is NOT like an Abandoned Well, which is where the wellhead has been removed and the seabed cleared of structures.



For more information of suspended wellheads and other oil & gas structures, please download the FishSAFE Companion App. **The App can be downloaded for Android and Apple tablet devices via the Google Play and the App Store.** Just Search for "FishSAFE".

SUSPENDED WELLHEADS Amendments since the July 2016 Issue

Additions

Well Number	Latitude	Longitude
ICES Area IVa		
205/21a-7Z	60°11.959'N	3°51.843'W
ICES Area IV		
21/19-13	57°22.931'N	0°43.018'E



Support

The Kingfisher Yellow Card is provided by the Kingfisher Information Service of Seafish, to promote the awareness of suspended wellhead locations to fishing. Support for the production of this information is received from FLTC Services Ltd.

Disclaimer and Limitation of Liability

Whilst reasonable steps have been taken to ensure its accuracy, the data contained in this Yellow Card ("Yellow Card Data") is not verified. Neither Seafish nor FLTC Services Limited (together the "Parties" and each a "Party") makes any warranty, express or implied, as to accuracy, completeness or suitability for any particular purpose of the Yellow Card Data. Except for any liability which cannot be excluded or limited by applicable law, none of the Parties shall have any liability to You, meaning any person, firm, partnership, corporate body or any other legal person receiving or otherwise using, or benefiting from the use of, Yellow Card Data for any damage or losses (including indirect, incidental, special or consequential loss or damage) caused by any: (i) use of the Yellow Card Data, or (ii) error or omission in the Yellow Card Data. Notwithstanding the foregoing exclusion of liability, in the event that any of the Parties are found liable to You, then the Parties' entire liability in such event, whether in contract, delict (including negligence) or otherwise, shall not exceed £1,000. The Admiralty Notices to Mariners should also be consulted.

Complete January 2017 List

(FishSAFE Information (FSI) Version 33)

Well Number	Latitude	Longitude
ICES Area IIa		
219/28-2Z	62°07.619'N	0°27.827'E
ICES Area IVa		
3/03-7	60°53.189'N	1°28.556'E
3/03-12	60°51.228'N	1°33.284'E
3/03b-13Z	60°56.672'N	1°33.686'E
3/04a-10	60°56.699'N	1°43.515'E
3/04a-12	60°54.649'N	1°41.642'E
3/04a-13Z	60°57.721'N	1°41.553'E
3/04a-16	60°54.651'N	1°41.645'E
3/09a-11	60°44.601'N	1°46.970'E
3/14d-18	60°32.599'N	1°47.312'E
3/15-13A	60°31.382'N	1°56.385'E
3/20a-3	60°28.946'N	1°50.512'E
3/25-1	60°16.123'N	1°52.286'E
3/28-1	60°00.960'N	1°25.345'E
9/02b-5Z	59°54.002'N	1°15.341'E
9/03b-6Z	59°56.081'N	1°31.579'E
9/03b-7	59°56.062'N	1°33.000'E
9/08-1	59°43.501'N	1°33.372'E
9/08-2	59°44.892'N	1°34.450'E
9/08a-6Z	59°43.700'N	1°35.684'E
9/08a-7	59°44.385'N	1°33.603'E
9/08a-8	59°41.628'N	1°34.107'E
9/08a-9	59°42.214'N	1°33.413'E

Well Number	Latitude	Longitude
15/25b-6	58°11.925'N	0°58.708'E
15/29a-3	58°05.778'N	0°40.048'E
15/29a-5	58°05.417'N	0°45.718'E
15/29a-7	58°05.483'N	0°38.192'E
15/29a-14	58°05.745'N	0°45.748'E
15/30-10	58°04.426'N	0°56.268'E
16/03d-16Z	58°54.645'N	1°26.191'E
16/07a-32	58°46.106'N	1°13.395'E
16/21b-5	58°15.008'N	1°02.808'E
16/23-1	58°14.153'N	1°35.172'E
16/26-25	58°06.386'N	1°07.459'E
16/28-11	58°07.609'N	1°27.953'E
16/28a-18	58°05.053'N	1°34.587'E
16/29a-11Y	58°02.431'N	1°40.133'E
20/01-12Y	57°52.071'N	0°56.343'W
20/02a-8	57°50.083'N	0°37.677'W
20/05a-10Y	57°55.744'N	0°00.264'W
21/01-3	57°54.133'N	0°03.553'E
21/10-3A	57°43.768'N	0°51.464'E
21/10-8	57°47.024'N	0°49.752'E
22/07-3	57°40.678'N	1°12.143'E
22/09-2	57°46.600'N	1°46.147'E
22/09-3	57°44.902'N	1°46.939'E
22/10a-4	57°44.095'N	1°50.356'E
22/10a-5	57°45.169'N	1°52.104'E

Well Number	Latitude	Longitude
213/27-4X	61°03.929'N	3°42.460'W
ICES Area IVb		
21/19-5	57°25.018'N	0°46.062'E
21/19-13	57°22.931'N	0°43.018'E
21/23a-8	57°14.900'N	0°27.770'E
21/23a-9	57°14.253'N	0°27.629'E
21/24-2	57°10.395'N	0°46.141'E
21/28a-9Y	57°08.850'N	0°32.482'E
21/28a-10Z	57°09.386'N	0°31.515'E
21/29a-6	57°09.926'N	0°44.592'E
22/17-4Z	57°23.904'N	1°17.819'E
22/20a-7	57°22.176'N	1°53.739'E
22/23b-6	57°10.277'N	1°27.014'E
22/28a-4	57°09.880'N	1°27.591'E
22/29-5Z	57°08.904'N	1°46.967'E
22/30a-14Y	57°08.429'N	1°55.158'E
23/16a-4	57°23.263'N	2°00.865'E
23/16f-11	57°20.200'N	2°05.702'E
23/16f-12Z	57°21.857'N	2°05.394'E
23/26b-8	57°01.719'N	2°03.676'E
28/15-2	56°32.356'N	0°58.346'E
29/02a-10	56°59.622'N	1°17.305'E
29/02c-11Y	56°53.950'N	1°14.026'E
29/04d-4	56°59.476'N	1°47.064'E
29/05a-5	56°50.149'N	1°50.778'E

Well Number	Latitude	Longitude
48/06-26	53°47.869'N	1°02.158'E
48/07b-8	53°48.540'N	1°12.738'E
48/07b-10	53°48.525'N	1°12.741'E
48/10a-15Y	53°40.722'N	1°58.641'E
48/11b-6	53°33.220'N	1°03.093'E
48/12b-4	53°30.673'N	1°12.431'E
48/15b-10	53°37.500'N	1°52.038'E
49/11a-6	53°32.341'N	2°11.695'E
49/12-2	53°31.579'N	2°15.242'E
ICES Area IVc		
48/17b-3	53°26.620'N	1°18.161'E
48/18b-6Z	53°22.181'N	1°35.863'E
48/18b-13	53°24.395'N	1°31.452'E
48/18c-14	53°21.367'N	1°33.733'E
48/19b-8	53°22.056'N	1°37.158'E
49/18-5Z	53°28.434'N	2°25.686'E
49/21-10A	53°14.603'N	2°05.007'E
49/22-16	53°14.725'N	2°13.959'E
49/23-8	53°14.542'N	2°26.157'E
49/28-1	53°01.718'N	2°24.120'E
49/28-12Z	53°05.895'N	2°27.995'E
49/28-14	53°04.365'N	2°28.745'E
49/29a-7	53°09.443'N	2°44.377'E
53/03c-6	52°53.168'N	2°35.607'E
53/04-4	52°54.162'N	2°37.171'E

9/11a-8Y	59°35.247'N	1°04.552'E
9/13-5	59°29.993'N	1°32.436'E
9/13-18	59°31.904'N	1°26.726'E
9/13-19	59°36.056'N	1°30.551'E
9/13a-27	59°31.903'N	1°26.735'E
9/13c-33	59°34.880'N	1°33.999'E
9/19-2	59°25.949'N	1°42.308'E
9/19-11	59°25.406'N	1°42.630'E
9/19b-18X	59°26.887'N	1°37.155'E
9/28a-18	59°07.581'N	1°31.023'E
9/29a-1	59°09.817'N	1°37.868'E
12/26c-5	58°08.193'N	2°59.611'W
13/24a-8Y	58°11.016'N	1°20.744'W
13/28a-5	58°06.540'N	1°25.281'W
14/19-15	58°25.962'N	0°18.833'W
14/19-28	58°26.119'N	0°23.151'W
15/13a-9	58°33.222'N	0°30.821'E
15/13a-10	58°30.335'N	0°27.904'E
15/16a-24	58°22.565'N	0°01.066'E
15/17a-28Z	58°29.380'N	0°21.484'E
15/21a-51	58°14.109'N	0°06.722'E
15/22-16	58°14.785'N	0°23.426'E
15/23a-12	58°16.379'N	0°31.409'E
15/24b-5	58°19.289'N	0°41.083'E

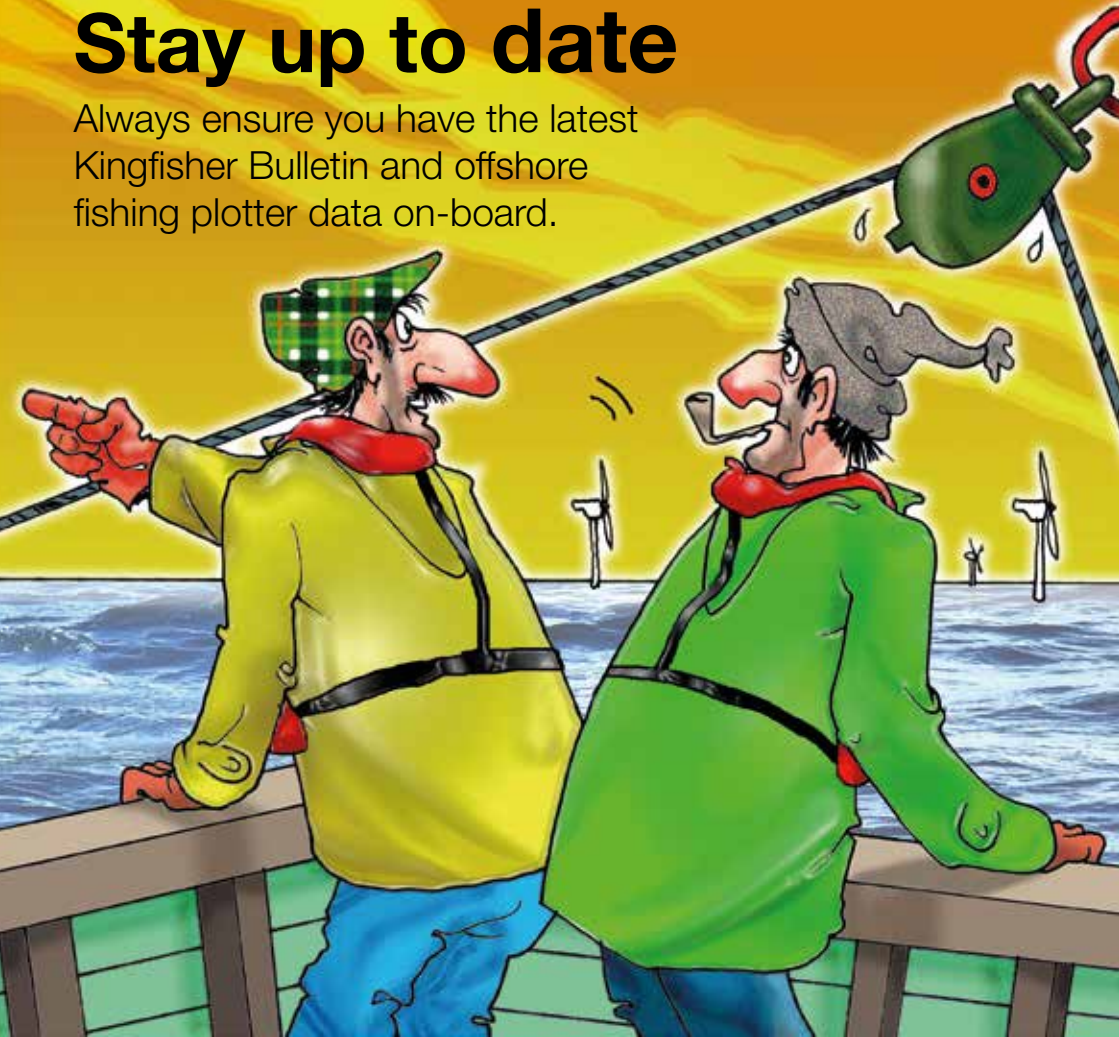
22/12a-8	57°38.126'N	1°20.051'E
22/14b-5	57°36.136'N	1°37.621'E
22/14b-6Q	57°36.136'N	1°37.604'E
205/01-1	60°59.512'N	3°49.938'W
205/21a-4Z	60°11.193'N	3°51.416'W
205/21a-5	60°16.991'N	3°50.407'W
205/21a-6	60°11.963'N	3°51.867'W
205/21a-7Z	60°11.959'N	3°51.843'W
205/27-3Z	60°08.002'N	3°42.663'W
206/08-5	60°40.982'N	2°33.183'W
206/08-13	60°45.127'N	2°26.830'W
206/08-15	60°42.885'N	2°32.531'W
206/12a-3	60°37.595'N	2°40.263'W
210/24a-8	61°11.544'N	0°44.302'E
210/30a-4X	61°07.403'N	0°48.493'E
211/08c-4Z	61°40.938'N	1°29.808'E
211/08c-5	61°42.093'N	1°29.505'E
211/19-2	61°23.405'N	1°44.098'E
211/19-6	61°26.592'N	1°42.777'E
211/24-4	61°10.680'N	1°46.508'E
211/27-4A	61°06.481'N	1°17.029'E
211/27a-14	61°02.921'N	1°17.186'E
211/29-10Z	61°09.831'N	1°47.597'E
213/27-2	61°05.447'N	3°41.334'W

30/01c-9	56°50.657'N	2°10.019'E
30/11b-4	56°33.120'N	2°09.208'E
30/12b-10	56°31.929'N	2°14.302'E
30/13a-9	56°34.784'N	2°30.267'E
30/18-3	56°25.614'N	2°32.767'E
42/13-4	54°34.314'N	0°28.635'E
42/13a-6	54°34.205'N	0°30.810'E
42/28d-12	54°01.998'N	0°27.716'E
42/28d-13Z	54°02.390'N	0°26.361'E
43/13b-7	54°31.291'N	1°25.153'E
43/24-3	54°16.487'N	1°45.755'E
43/27-1	54°02.573'N	1°13.980'E
44/17a-6Y	54°27.540'N	2°21.734'E
44/18-2Z	54°28.892'N	2°31.691'E
44/19b-7A	54°21.697'N	2°41.020'E
44/23a-10	54°18.989'N	2°25.126'E
44/28a-6	54°06.297'N	2°34.104'E
44/29b-4	54°09.533'N	2°47.355'E
47/04b-5	53°59.522'N	0°45.948'E
47/09b-6	53°45.365'N	0°42.191'E
48/01a-5	53°54.740'N	1°00.386'E
48/01a-6	53°54.460'N	1°01.006'E
48/02-1	53°51.586'N	1°13.182'E
48/02c-5	53°52.114'N	1°12.416'E

53/05a-3	52°58.470'N	2°55.914'E
53/05b-5	52°58.121'N	2°58.990'E
ICES Area VIIa		
106/24-1	52°11.229'N	5°20.000'W
110/02a-8	53°56.355'N	3°40.460'W
110/02b-10	53°50.586'N	3°44.670'W
110/03-3	53°50.207'N	3°34.943'W
110/03b-4	53°52.487'N	3°27.320'W
110/03b-6A	53°56.153'N	3°27.042'W
110/08a-4	53°43.256'N	3°32.286'W
110/13-2	53°31.696'N	3°34.030'W
110/13-4	53°32.485'N	3°26.901'W
110/13-10	53°31.408'N	3°33.347'W
110/13-11	53°30.974'N	3°34.289'W
110/13-13	53°32.163'N	3°33.914'W
110/15-6Z	53°37.894'N	3°09.800'W
ICES Area VIa		
204/24-1A	60°18.768'N	4°16.068'W
ICES Area Vb		
204/10a-4Z	60°49.433'N	4°08.032'W
204/14-1	60°30.414'N	4°17.854'W

Stay up to date

Always ensure you have the latest Kingfisher Bulletin and offshore fishing plotter data on-board.



“Since you put the winch in gear that turbine’s gaining on us!”

Stay up to date

Always ensure you have the latest Kingfisher Bulletin and offshore fishing plotter data on-board.