

Stay up to date

Oil & gas decommissioning may create new hazards – always have the latest Kingfisher Bulletin and fishing plotter data.

Contact us

☎ +44 (0) 1472 252 307

✉ kingfisher@seafish.co.uk

🐦 [@kingfisherinfo](https://twitter.com/kingfisherinfo)

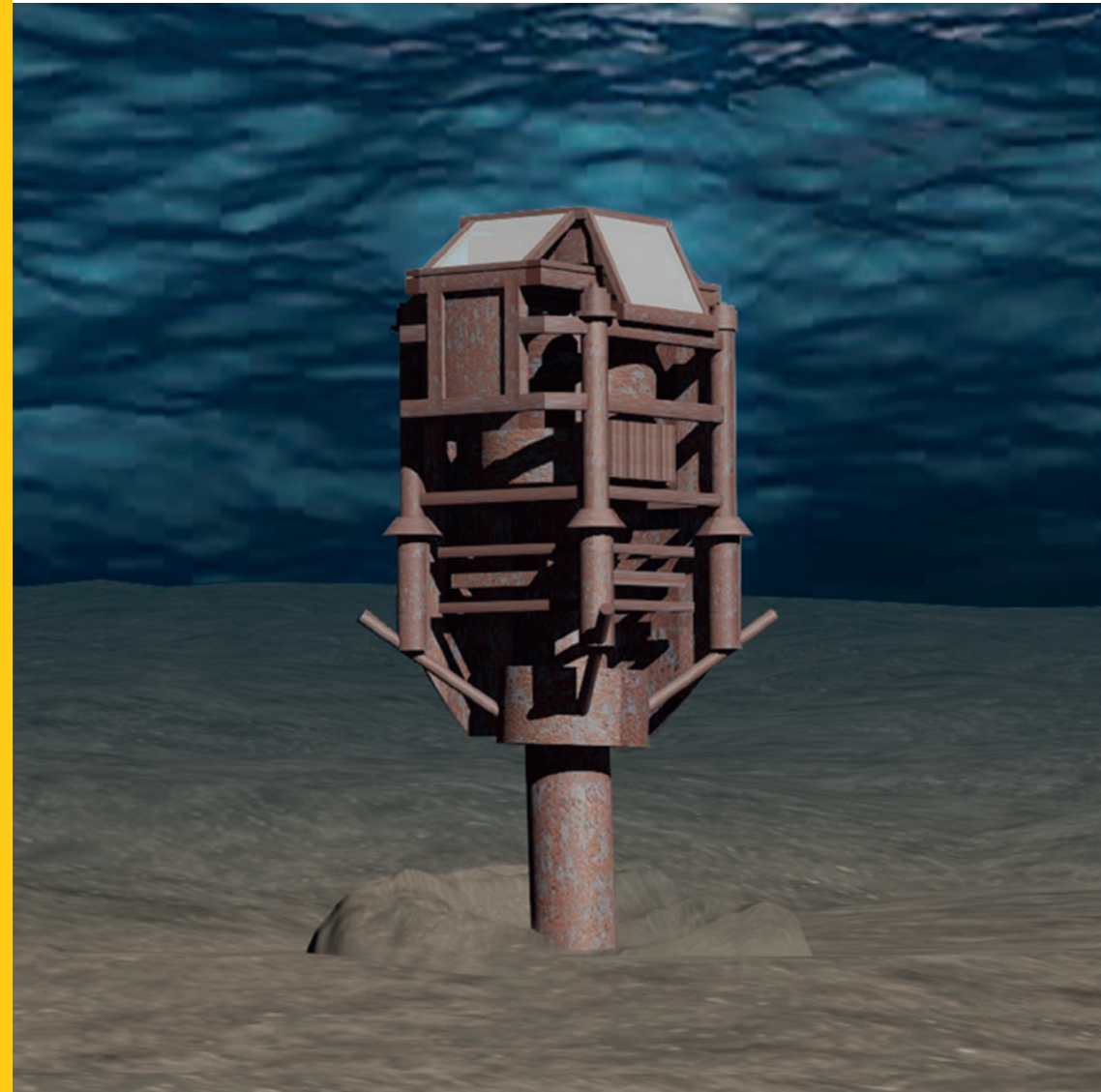
www.seafish.org/kingfisher



Kingfisher Yellow Card

The positions of suspended wellheads
January 2022

seafish
Kingfisher
Information Service



What is a Suspended Wellhead?

A Suspended Wellhead describes structures or equipment located above the seabed which relate to a well that is not currently in production and has been suspended awaiting further intervention. A well may be suspended for a variety of reasons, such as the well is no longer productive, or possibly the well is shut down awaiting work-over operations.

Suspended wellheads present a large solid structure on the seabed that will be physically connected to well casing and quite possibly production casing traveling many kilometres into the reservoir. This is in effect an immovable object to fishermen. A suspended wellhead may stick up 4 metres from the seabed.

Suspended Wellheads are not protected by 500 metre Safety Zones and are not required to have an overtrawlable protection structure.

A SUSPENDED WELL IS NOT LIKE AN ABANDONED WELL, WHICH IS WHERE THE WELLHEAD HAS BEEN REMOVED AND THE SEABED CLEARED OF STRUCTURES.



For more information of suspended wellheads and other oil & gas structures, please download the FishSAFE Companion App. The App can be downloaded for Android and Apple tablet devices via the Google Play and the App Store. Search for "FishSAFE".

Positions of Suspended Wellheads

Coordinates = WGS84

January 2022

(FishSAFE Information (FSI) Version 43)

This list EXCLUDES suspended wellheads located within ALL SAFETY ZONES

Support

The Kingfisher Yellow Card is provided by the Kingfisher Information Service of Seafish, to promote awareness of suspended wellhead locations to fishing. Support for the publication of the Kingfisher Yellow Card is provided by FLTC Services Ltd, as part of the FishSAFE project.

Disclaimer and Limitation of Liability

The information contained in this Yellow Card ("Yellow Card Data") has been prepared for general information only and should not be relied upon. Whilst reasonable steps have been taken to ensure the Yellow Card Data is correct at the time of release, Seafish and FLTC Services Limited (together the "Parties" and each a "Party") expressly disclaim all warranties, express or implied, as to currency, accuracy, completeness or suitability for any particular purpose of the Yellow Card Data. Except for any liability which cannot be excluded or limited by applicable law, the Parties shall not have any liability to any party using the Yellow Card Data for any claims, damage or losses (including all direct and indirect or consequential losses or damage) in any way attributable to: (i) use of, or reliance placed on, the Yellow Card Data, or (ii) error or omission in the Yellow Card Data. Notwithstanding the foregoing exclusion of liability, the Parties' entire liability, whether in contract, delict (including negligence) or otherwise, shall not exceed a maximum £1,000. The Parties recommend that the Kingfisher Bulletin and Admiralty Notices to Mariners should also be consulted.



Suspended wellheads

Complete January 2022 List

Well Number	Latitude	Longitude
ICES Area IVa		
3/03-7	60°53.190'N	1°28.556'E
3/03-12	60°51.228'N	1°33.284'E
3/04a-E2	60°59.481'N	1°40.935'E
3/04a-E3	60°59.481'N	1°40.935'E
3/04a-10	60°56.699'N	1°43.515'E
3/04a-12	60°54.649'N	1°41.642'E
3/04a-13Z	60°57.721'N	1°41.553'E
3/04a-16	60°54.651'N	1°41.645'E
3/11-1	60°33.698'N	1°10.127'E
3/15-13A	60°31.382'N	1°56.385'E
3/20a-3	60°28.946'N	1°50.512'E
9/02b-5Z	59°54.002'N	1°15.341'E
9/08-1	59°43.501'N	1°33.372'E
9/08-2	59°44.893'N	1°34.399'E
9/08a-6Z	59°43.700'N	1°35.683'E
9/08a-7	59°44.385'N	1°33.603'E
9/08a-8	59°41.628'N	1°34.107'E
9/08a-9	59°42.214'N	1°33.413'E
9/13-5	59°30.025'N	1°32.443'E
9/13-18	59°31.904'N	1°26.725'E
9/13-19	59°36.056'N	1°30.437'E
9/13a-27	59°31.903'N	1°26.735'E
9/13c-33	59°34.881'N	1°33.999'E
9/19-11	59°25.404'N	1°42.628'E
12/26c-5	58°08.193'N	2°59.611'W
13/24a-8Y	58°11.016'N	1°20.744'W
14/19a-28	58°26.118'N	0°23.152'W
15/13a-9	58°33.222'N	0°30.821'E
15/13a-10	58°30.335'N	0°27.904'E
15/21a-51	58°14.109'N	0°06.722'E
15/23a-12	58°16.379'N	0°31.408'E
15/24b-5	58°19.289'N	0°41.083'E
15/25b-6	58°11.925'N	0°58.708'E
15/25b-10	58°12.274'N	0°56.542'E
15/29a-3	58°05.779'N	0°40.048'E
15/29a-5	58°05.417'N	0°45.718'E
15/29a-7	58°05.483'N	0°38.192'E
15/30-10	58°04.426'N	0°56.268'E
16/07a-32	58°46.106'N	1°13.395'E
16/21a-B11	58°13.721'N	1°06.442'E
16/21a-B8	58°13.721'N	1°06.442'E
16/21a-B9	58°13.721'N	1°06.442'E
16/21b-5	58°15.009'N	1°02.807'E
16/21a-10Z	58°12.964'N	1°07.042'E
16/21a-11	58°14.676'N	1°04.122'E
16/23-1	58°14.153'N	1°35.172'E
16/26-25	58°06.386'N	1°07.460'E
16/29a-11Y	58°02.431'N	1°40.133'E
16/29e-19	58°05.680'N	1°37.933'E
20/01-12Y	57°52.071'N	0°56.343'W
20/05a-10Y	57°55.744'N	0°00.264'W

Well Number	Latitude	Longitude
21/01-3	57°54.142'N	0°03.521'E
21/10-3A	57°43.764'N	0°51.464'E
21/10-8	57°47.024'N	0°49.752'E
22/07-3	57°40.678'N	1°12.143'E
22/12a-8	57°38.126'N	1°20.051'E
22/14b-5	57°36.136'N	1°37.621'E
22/14b-6Q	57°36.136'N	1°37.604'E
205/01-1	60°59.512'N	3°49.938'W
205/27-3Z	60°08.002'N	3°42.663'W
206/08-5	60°40.982'N	2°33.183'W
206/08-13Y	60°45.127'N	2°26.831'W
206/08-15	60°42.885'N	2°32.531'W
210/24a-8	61°11.544'N	0°44.302'E
210/30-1	61°04.093'N	0°53.987'E
210/30a-4X	61°07.403'N	0°48.493'E
211/08c-4Z	61°40.939'N	1°29.808'E
211/08c-5	61°42.092'N	1°29.505'E
211/22a-10	61°18.514'N	1°16.612'E
211/27a-14	61°02.921'N	1°17.186'E
211/29-10Z	61°09.831'N	1°47.597'E
213/27-2	61°05.447'N	3°41.334'W
213/27-4X	61°03.929'N	3°42.460'W
ICES Area IVb		
21/19-5Z	57°25.017'N	0°46.062'E
21/19-13	57°22.931'N	0°43.018'E
21/24-2	57°10.396'N	0°46.141'E
21/29a-6	57°09.926'N	0°44.592'E
22/17-4Z	57°23.904'N	1°17.819'E
22/20a-7	57°22.176'N	1°53.739'E
22/23b-6	57°10.277'N	1°27.014'E
22/28a-4	57°09.880'N	1°27.592'E
22/30a-14Y	57°08.429'N	1°55.158'E
23/16f-11	57°20.200'N	2°05.702'E
23/16f-12Z	57°21.857'N	2°05.394'E
23/26b-8	57°01.719'N	2°03.676'E
29/02a-10	56°59.622'N	1°17.305'E
29/02c-11Y	56°53.950'N	1°14.026'E
29/04d-4	56°59.476'N	1°47.063'E
29/05a-5	56°50.148'N	1°50.778'E
30/11b-4	56°33.120'N	2°09.208'E
30/12b-10	56°31.930'N	2°14.302'E
30/18-3	56°25.612'N	2°32.755'E
30/19-1	56°26.764'N	2°42.167'E
31/26-3	56°09.621'N	3°03.448'E
31/26-7	56°09.335'N	3°03.500'E
42/13-4	54°34.314'N	0°28.635'E
42/13a-6	54°34.205'N	0°30.810'E
43/13b-7	54°31.291'N	1°25.153'E
43/24-3	54°16.487'N	1°45.755'E
43/27-1	54°02.576'N	1°13.972'E
44/19b-7A	54°21.697'N	2°41.020'E
44/23a-10	54°18.990'N	2°25.136'E

Well Number	Latitude	Longitude
44/29b-4	54°09.533'N	2°47.355'E
48/01a-5	53°54.740'N	1°00.386'E
48/01a-6	53°54.461'N	1°01.019'E
48/06-26	53°47.869'N	1°02.158'E
48/07b-8	53°48.540'N	1°12.738'E
48/07b-10	53°48.540'N	1°12.740'E
48/12b-4	53°30.673'N	1°12.431'E
49/10a-9	53°43.138'N	2°52.607'E
ICES Area IVc		
48/17b-3	53°26.619'N	1°18.160'E
48/18b-6Z	53°22.181'N	1°35.863'E
48/18b-13	53°24.395'N	1°31.452'E
48/18c-14	53°21.367'N	1°33.733'E
48/19b-8	53°22.056'N	1°37.159'E
49/17-13Z	53°23.867'N	2°13.970'E
49/18-5Z	53°28.442'N	2°25.700'E
49/21-10	53°14.604'N	2°05.005'E
49/21-10A	53°14.603'N	2°05.007'E
49/23-8	53°14.542'N	2°26.157'E
49/28-1	53°01.718'N	2°24.120'E
49/29a-7	53°09.443'N	2°44.377'E
53/05a-3	52°58.470'N	2°55.914'E
53/05b-5	52°58.121'N	2°58.990'E
ICES Area VIIa		
110/02b-10	53°50.586'N	3°44.670'W
110/08a-4	53°43.256'N	3°32.285'W
110/13-2	53°31.696'N	3°34.029'W
110/13-4	53°32.498'N	3°26.899'W
110/13-10	53°31.408'N	3°33.347'W
110/13-11	53°30.975'N	3°34.291'W
110/13-13	53°32.163'N	3°33.914'W
110/13-14	53°35.937'N	3°24.504'W
110/15-6Z	53°37.894'N	3°09.800'W
ICES Area Vb		
204/10a-5Y	60°49.083'N	4°09.351'W
204/14-1	60°30.407'N	4°18.064'W

Amendments since July 2021

Additions Added to the seabed

Well Number	Latitude	Longitude
ICES Area IVa		
16/21a-B11	58°13.721'N	1°06.442'E
16/21a-B8	58°13.721'N	1°06.442'E
16/21a-B9	58°13.721'N	1°06.442'E
ICES Area IVb		
30/19-1	56°26.764'N	2°42.167'E

Deletions Removed from the seabed

Well Number	Latitude	Longitude
ICES Area IIa		
219/28-2Z	62°07.617'N	0°27.810'E
ICES Area IVa		
3/25-1	60°16.123'N	1°52.286'E
3/28-1	60°00.969'N	1°25.331'E
9/11a-8Y	59°35.246'N	1°04.549'E
15/29a-14	58°05.745'N	0°45.748'E
16/06a-V2	58°47.853'N	1°08.068'E
205/21a-4Z	60°11.257'N	3°51.501'W
205/26b-14	60°07.102'N	3°55.085'W
206/09b-5	60°40.123'N	2°23.829'W
ICES Area IVb		
21/25-B1Z	57°11.870'N	0°54.912'E
21/30-27	57°02.328'N	0°56.944'E
30/24b-T4	56°11.316'N	2°46.102'E
42/28d-15	54°02.409'N	0°26.383'E
42/28d-16	54°02.403'N	0°26.379'E
42/28d-17	54°02.408'N	0°26.388'E
47/04a-7	53°55.464'N	0°37.534'E
49/11a-6	53°32.341'N	2°11.695'E
49/12-2	53°31.593'N	2°15.326'E
ICES Area IVc		
49/23-1	53°19.274'N	2°31.513'E
49/27-5	53°06.009'N	2°12.650'E
49/29a-G1	53°09.534'N	2°44.018'E
49/29a-G2	53°09.533'N	2°44.020'E
49/29a-G3	53°09.536'N	2°44.016'E
53/02a-14A	52°58.986'N	2°18.121'E
ICES Area VIa		
204/24-1A	60°18.768'N	4°16.068'W