



# Kingfisher Fortnightly Bulletin



Subsea Cables

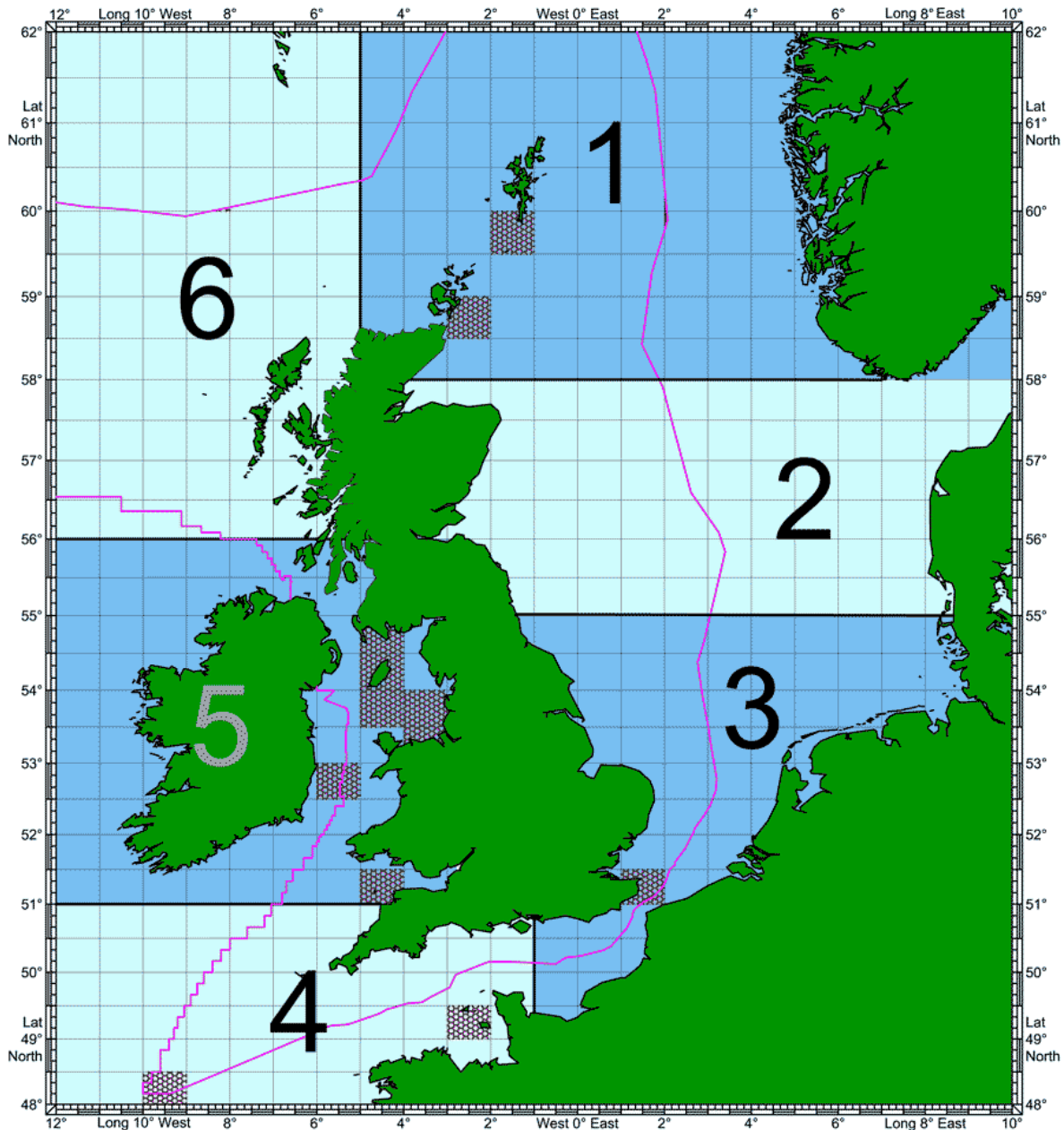
Subsea Cables

Subsea Cables

9<sup>th</sup> December 2010

Issue 25 / 2010

The shaded blocks below indicate the areas of activity published within this Bulletin.



This Bulletin, along with previous issues, can be viewed at: [www.kingfishercharts.org](http://www.kingfishercharts.org).  
Alternatively you can receive the Bulletin via email, by contacting: [kingfisher@seafish.co.uk](mailto:kingfisher@seafish.co.uk)

*\* Unless otherwise stated, all co-ordinates listed in this Bulletin refer to WGS 84 datum*

Page 2	Area 1
-	Area 2
Page 3	Area 3
Page 4	Area 4
Pages 5 - 7	Area 5
-	Area 6



# Kingfisher Fortnightly Bulletin



## Subsea Cables      Subsea Cables      Subsea Cables

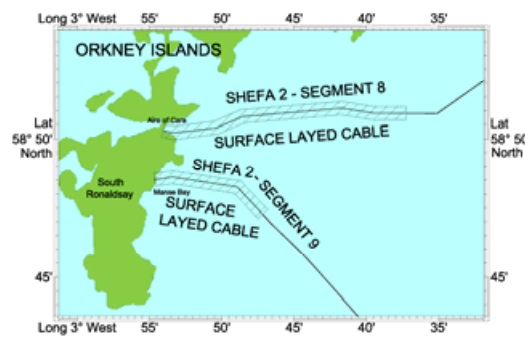
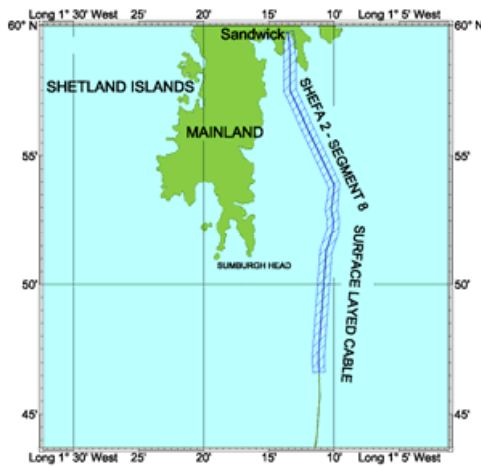
9<sup>th</sup> December 2010

Issue 25 / 2010

### Exposed Cable Sections – SHEFA-2 Segments 8 & 9 (New Entry 08-01-2009)

Please be advised that the shore end sections of the SHEFA-2 Segment 8 cable have been surface laid for approximately 17 kilometres from the Orkney landing and 26 kilometres from the Shetland landing and therefore represents a hazard to fishing and should be avoided at all times. The Orkney landing of the SHEFA-2 Segment 9 cable has also been surface laid for a distance of approximately 9 kilometres from shore. A part buried section further south along the route also exists.

Please see the charts below for details of the exposed sections and for coordinates of these sections, please see Kingfisher Fortnightly Bulletin – 25 / 2009.



Area 1

Area 1

Area 1

Area 1

Area 1



# Kingfisher Fortnightly Bulletin



Subsea Cables

Subsea Cables

Subsea Cables

9<sup>th</sup> December 2010

Issue 25 / 2010

## Cable Repair – Ulysses North – 6.1km from Lowestoft (Update 15-11-2010)

Please be advised that all work has now been completed on the Ulysses North cable system; CS Wave Sentinel has cleared the ground and is returning to her base port.

The position of the repair is: 52°24.9597'N 001°48.2420'E.

For further information, please contact: Tom Simpson, Tel +44(0)1245 703013, Email: tom.simpson@globalmarinesystems.com

## Hazardous Condition of Cable – Ulysses South landing - St Margaret's Bay

Further to earlier Notices, the Ulysses South submarine cable landing at St Margaret's Bay, near Dover, remains broken at a position:

51°08.70'N 01° 24.06'E

This position lies approximately 1.3km offshore in a water depth of 15 metres. As a result of this fault, the cable at the approaches to St Margaret's Bay has been dragged an indeterminate distance to the north of its as laid route on either side of the fault position. Caution should therefore be exercised in this area until the cable repair operation has been carried out.



For further information, please contact: Tom Manning, Tel: +44 (0)7795 445192, Email: tom.manning@globalmarinesystems.com

Area 3

Area 3

Area 3

Area 3

Area 3



# Kingfisher Fortnightly Bulletin



Subsea Cables      Subsea Cables      Subsea Cables

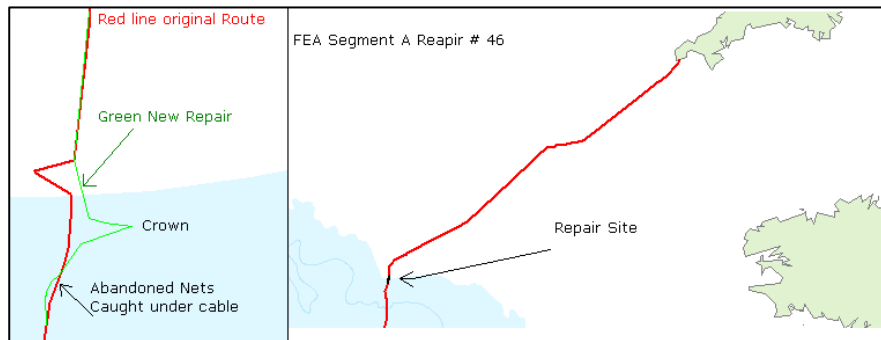
9<sup>th</sup> December 2010

Issue 25 / 2010

## Cable Repair – Hazard to Fishermen (New Entry 30-09-2008)

Following a repair on the Reliance Globalcom FEA Segment A cable at 48°07.3216'N 009°29.7775'W, short lengths of cable within the final bight have not been fully reburied on the steep seabed slopes at this location. The final bight extends out to the East from the cable line from 48°07.3202'N 009°29.8122'W to the crown at 48°07.3202'N 009°29.8145'W - water depth 738.3m.

There are also abandoned fishing nets caught under the re-laid cable which are floating clear of the seabed between 48°06.8080'N 009°30.9012'W and 48°06.8078'N 009°30.9008'W - water depth 977.1m. As these two items could constitute a hazard to fishing vessels bottom trawling we would request that all fishing vessels give this area a wide berth.



For further information, please contact: Martin Tegg, Manager Marine Maintenance, [mtegg@relianceglobalcom.com](mailto:mtegg@relianceglobalcom.com), Mob: 07747474819, Office: 020 8564 5800. Or Michael Cross, Manager Marine Operations, [mcross@relianceglobalcom.com](mailto:mcross@relianceglobalcom.com), Mob: 07880634956.

## Cable Movement – Fliquet Bay, Jersey – Armanville Plage, France

During recent surveys, it has been discovered that the three cables running from Fliquet Bay, Jersey running to Armanville Plage, France are not in their charted positions as per Admiralty Chart 3655. It has been discovered that there has been extensive dragging, lifting, severing, and dropping back to the sea bed in uncharted positions.

The positions of the cables should be taken to indicate that the three cables do exist, but may be no where near the indicated position.

Area 4

Area 4

Area 4

Area 4

Area 4



9<sup>th</sup> December 2010

Issue 25 / 2010

### Essential Cable Maintenance – Hibernia ‘A’ (New Entry 07-12-2010)

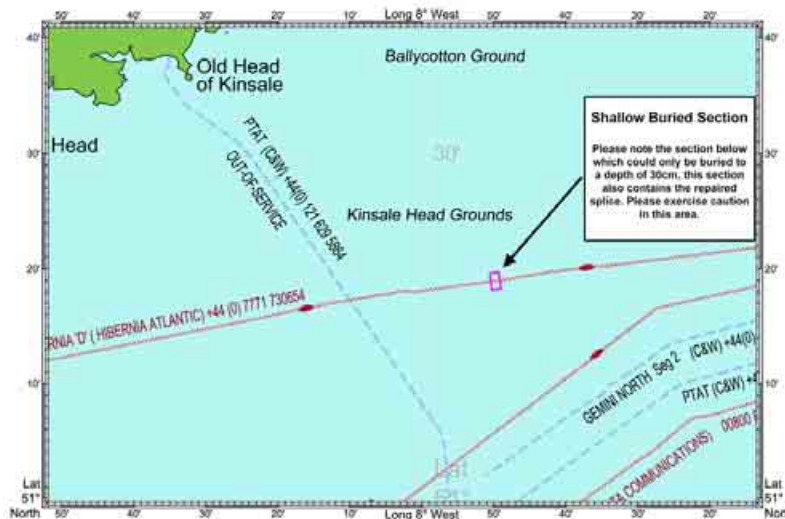
Global Marine Systems Limited is contracted to conduct essential maintenance to the ‘Hibernia Segment A’ submarine telecommunications cable, in the Irish Sea approximately 60km south of the Isle of Man. CS Wave Sentinel (call sign: MZBC8) is expected to commence operations at on the cable working ground at 2000hrs 10th December 2010.

The position of the repair is: 53°54.3751'N 004°24.5091'W.

For further information, please contact: Tom Manning, Tel: +44 (0)7795 445192, Email: [tom.manning@globalmarinesystems.com](mailto:tom.manning@globalmarinesystems.com)

### Shallow Burial of Submarine Cable Section – Hibernia ‘D’ (New Entry 25-11-2010)

Following a recent repair to the Hibernia ‘D’ cable, there was difficulty in reburying the cable to the required depth of 1 metre. Please note the section below which could only be buried to a depth of 30cm, this section also contains the repaired splice. Please exercise caution in this area.



#### Shallow Buried Section

1. 51°18.893'N 007°50.289'W
2. 51°18.903'N 007°50.229'W
3. 51°18.997'N 007°50.127'W
4. 51°18.998'N 007°50.120'W
5. 51°18.927'N 007°50.011'W
6. 51°18.951'N 007°49.641'W
7. 51°18.974'N 007°49.336'W

For further information, please contact: Tom Manning, Tel: +44 (0)7795 445192, Email: [tom.manning@globalmarinesystems.com](mailto:tom.manning@globalmarinesystems.com)

### Survey Operations – Proposed Cable Route (Update 01-11-2010)

Fishermen are advised that marine survey operations that had been taking place along the proposed Anglo-Scottish HVDC Western Link cable route between Ardroneil (55°43.20'N 004°54.00'W) in the Firth of Clyde and East Hoyle Bank (53°25.00'N 003°08.00'W) in Liverpool Bay (The Wirral) have now been completed.

Colin Richards, Fishing Liaison – HVDC Western Link, Tel: +44 (0)1404 46323, Mobile: +44 (0)7702 693 660, Email: [colinrichards@networkmarine.fsnet.co.uk](mailto:colinrichards@networkmarine.fsnet.co.uk)

Area 5

Area 5

Area 5

Area 5

Area 5

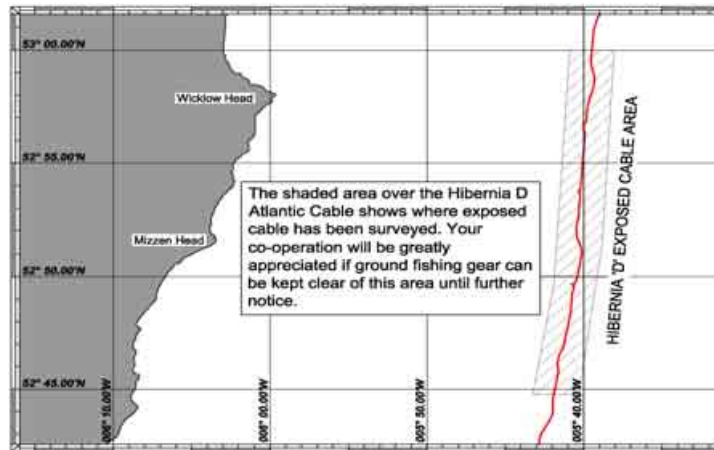


9<sup>th</sup> December 2010

Issue 25 / 2010

### Exposed Submarine Cable Section – Hibernia ‘D’

Please note that the Hibernia ‘D’ cable has been surveyed and has an exposed section. This is indicated in the map below.



The exposed section runs from 52° 59.433' N 05° 39.540' W to 52° 45.118' N 05° 41.797' W. **For full details of the exposed cable route, please refer to Kingfisher Fortnightly Bulletin Issue 24 / 2006.**

For further information, please contact: Tom Manning, Tel: +44 (0)7795 445192, Email: [tom.manning@globalmarinesystems.com](mailto:tom.manning@globalmarinesystems.com)

### Repair to SOLAS Cable – UK to Ireland

The SOLAS cable has been repaired due to a fault at the following position: 51°24.634'N 04°55.272'W. Burial was attempted, though the cable remains at risk of snagging with fishing gear as only shallow burial was achieved.

For further information, please contact: Jon Ford, Cable & Wireless UK, Waterside House, Longshot Lane, Bracknell, Berkshire, RG12 1XL, Tel: +44 (0)1344 713784, Mob: +44 (0) 7776 165571, Email: [Jon.Ford@cw.com](mailto:Jon.Ford@cw.com)

### Repair to Lanis Cable – UK – IOM (Off Port Grenaugh)

The LANIS 1 cable was damaged approximately 600m off Port Grenaugh beach on 27<sup>th</sup> November 2006. This fault has now been repaired by laying a new shore end section and unfortunately it was not possible to bury the cable at the bight area or the cable shoreward.

All fishing vessels are advised to keep clear of the area below and route below:

- |                              |                               |
|------------------------------|-------------------------------|
| 1. 54° 05.609'N 04° 33.599'W | 7. 54° 05.652'N 04° 33.818'W  |
| 2. 54° 05.678'N 04° 33.666'W | 8. 54° 05.866'N 04° 34.181'W  |
| 3. 54° 05 683'N 04° 33.669'W | 9. 54° 05.912'N 04° 34.258'W  |
| 4. 54° 05 683'N 04° 33.681'W | 10. 54° 06.102'N 04° 34.595'W |
| 5. 54° 05 678'N 04° 33.683'W | 11. 54° 06.158'N 04° 34.670'W |
| 6. 54° 05.655'N 04° 33.691'W |                               |

For further information, please contact: Jon Ford, Cable & Wireless UK, Waterside House, Longshot Lane, Bracknell, Berkshire, RG12 1XL, Tel: +44 (0)1344 713784, Mob: +44 (0) 7776 165571, Email: [Jon.Ford@cw.com](mailto:Jon.Ford@cw.com)

### Exposed Submarine Cable Section – Sirius South

Please note that the Sirius South' cable has been repaired and it was found that there is a section of exposed cable in the vicinity of the repair. Please see the map below showing the location of the repair.

**Continued over page...**

Area 5

Area 5

Area 5

Area 5

Area 5



# Kingfisher Fortnightly Bulletin

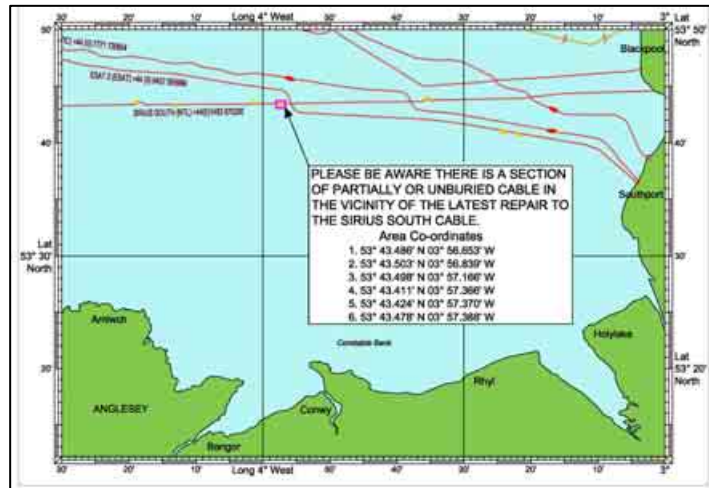


## Subsea Cables      Subsea Cables      Subsea Cables

9<sup>th</sup> December 2010

Issue 25 / 2010

...continued from previous page



For further information, please contact: Tom Manning, Tel: +44 (0)7795 445192, Email: [tom.manning@globalmarinesystems.com](mailto:tom.manning@globalmarinesystems.com)

Area 5

Area 5

Area 5

Area 5

Area 5